

An ornate, golden, carved wooden frame with intricate floral and scrollwork patterns, surrounding the text. The frame is set against a background of soft, overlapping blue and purple watercolor-like shapes on the left and a solid orange shape on the bottom right.

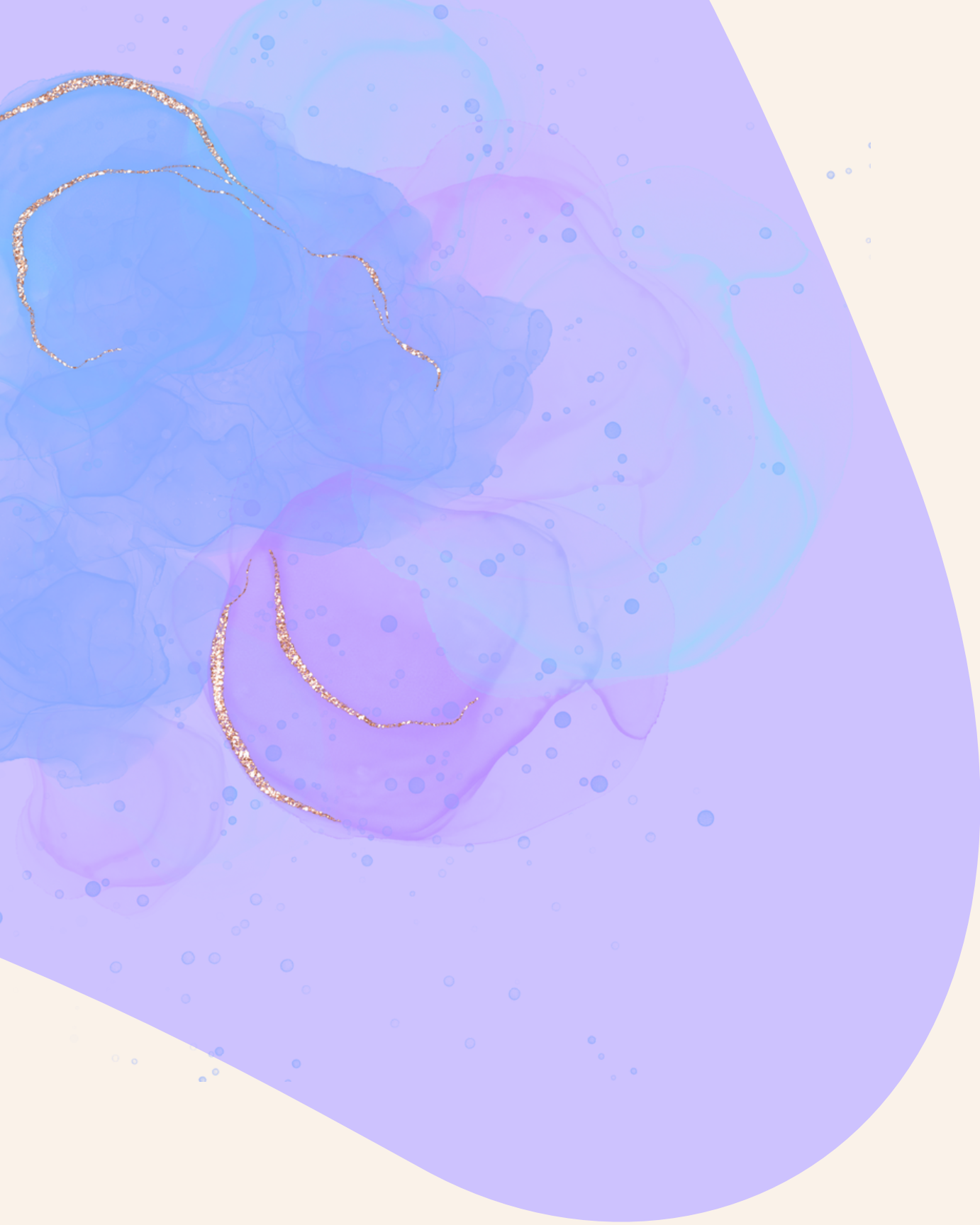
# POCZTÓWKA Z KRAKOWA





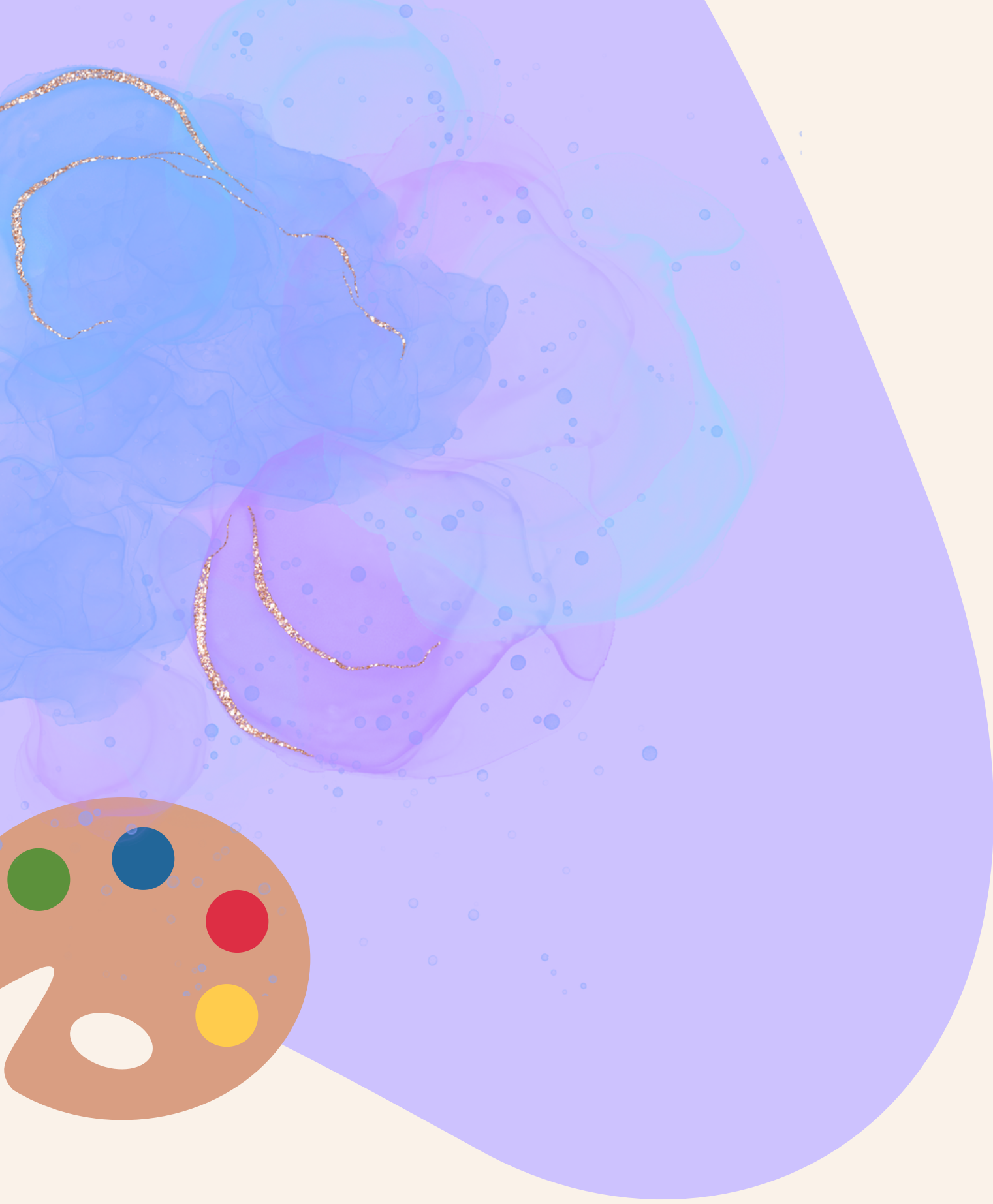
Aleksandra Gniłka, kl. 2a





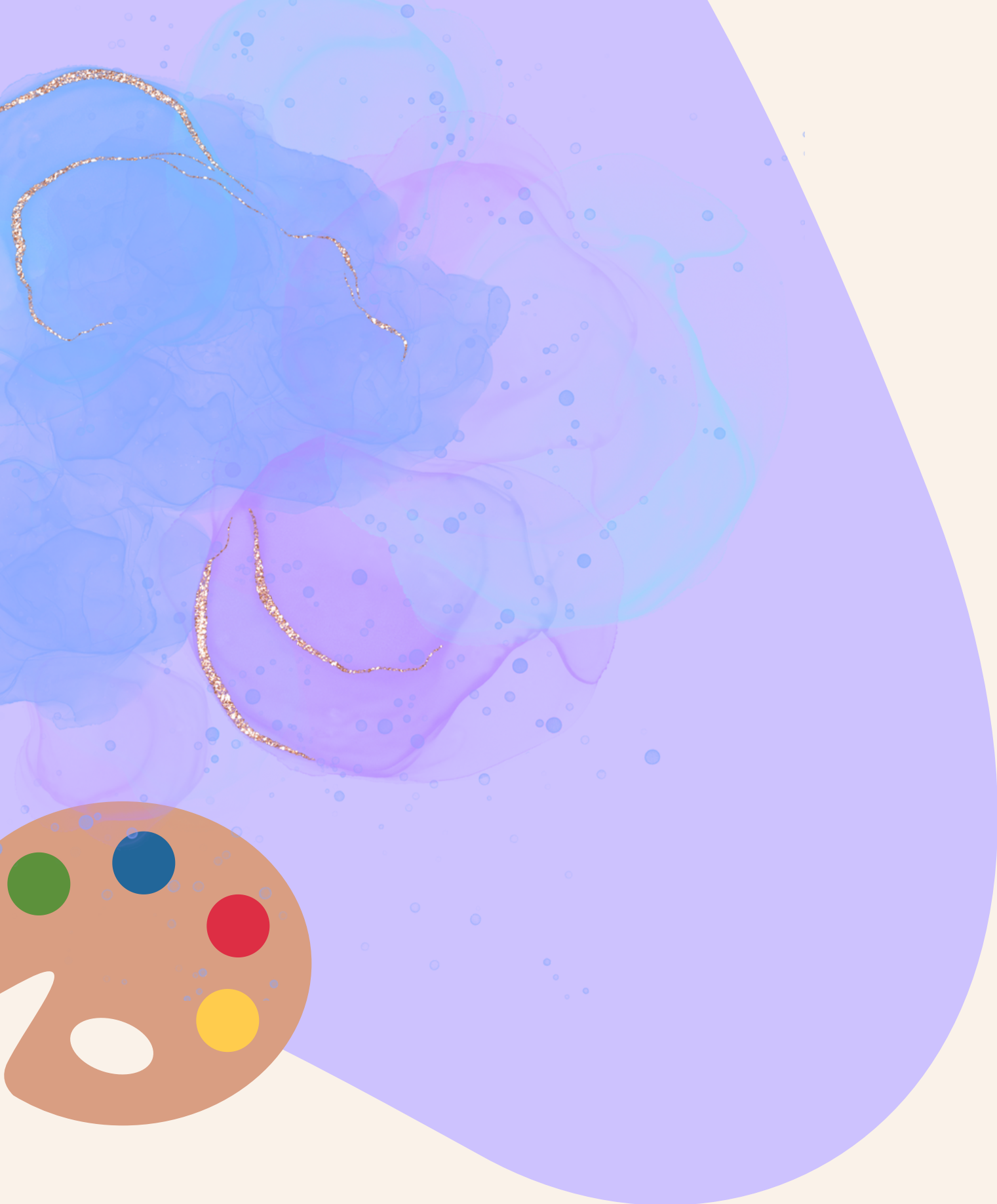
**Aniela Szyszka, kl. 2a**





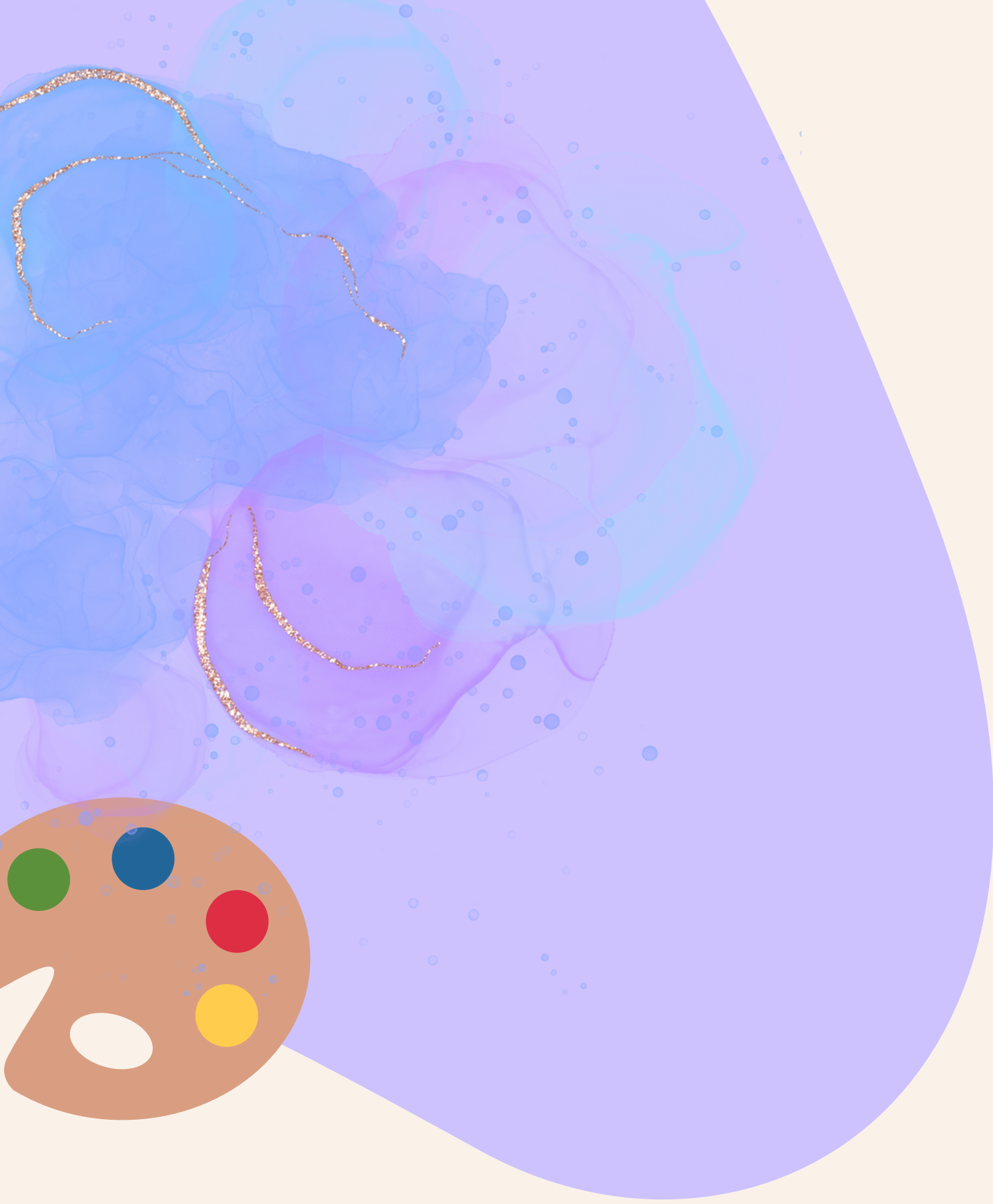
**Aleksandra Piskor, kl. 2b**





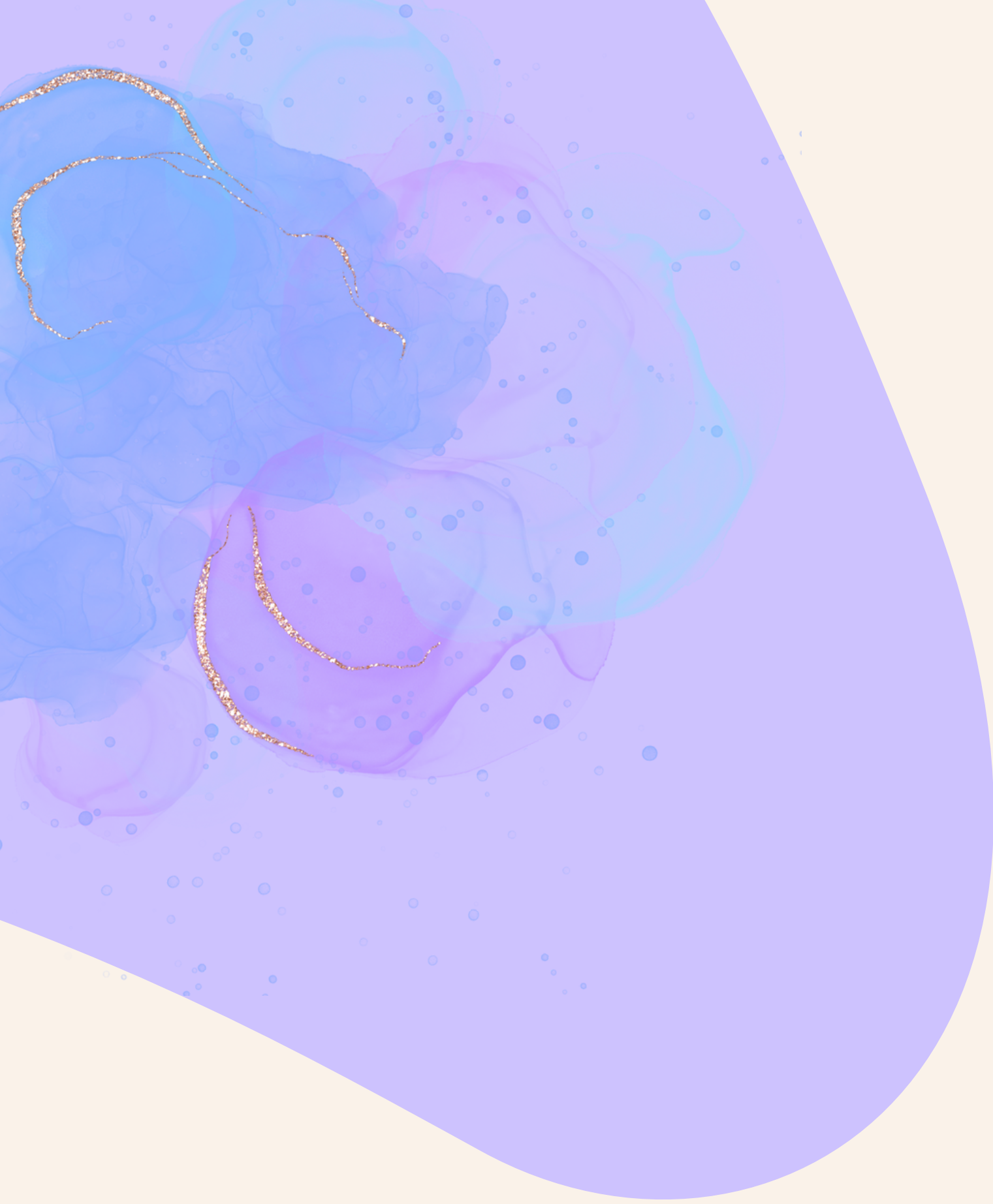
**Lidia Pawlik, kl. 2a**





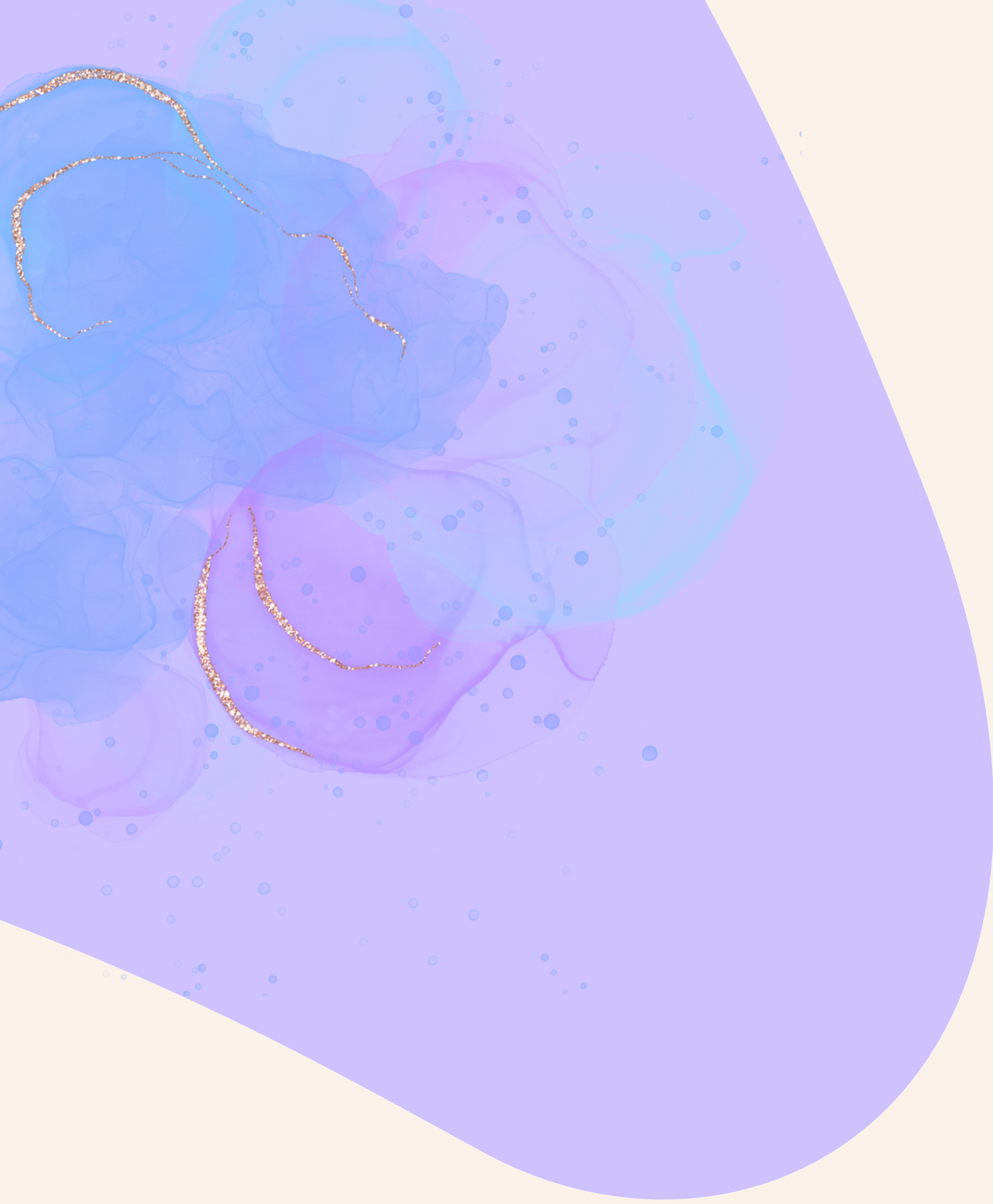
**Natalia Patyna, kl. 2b**





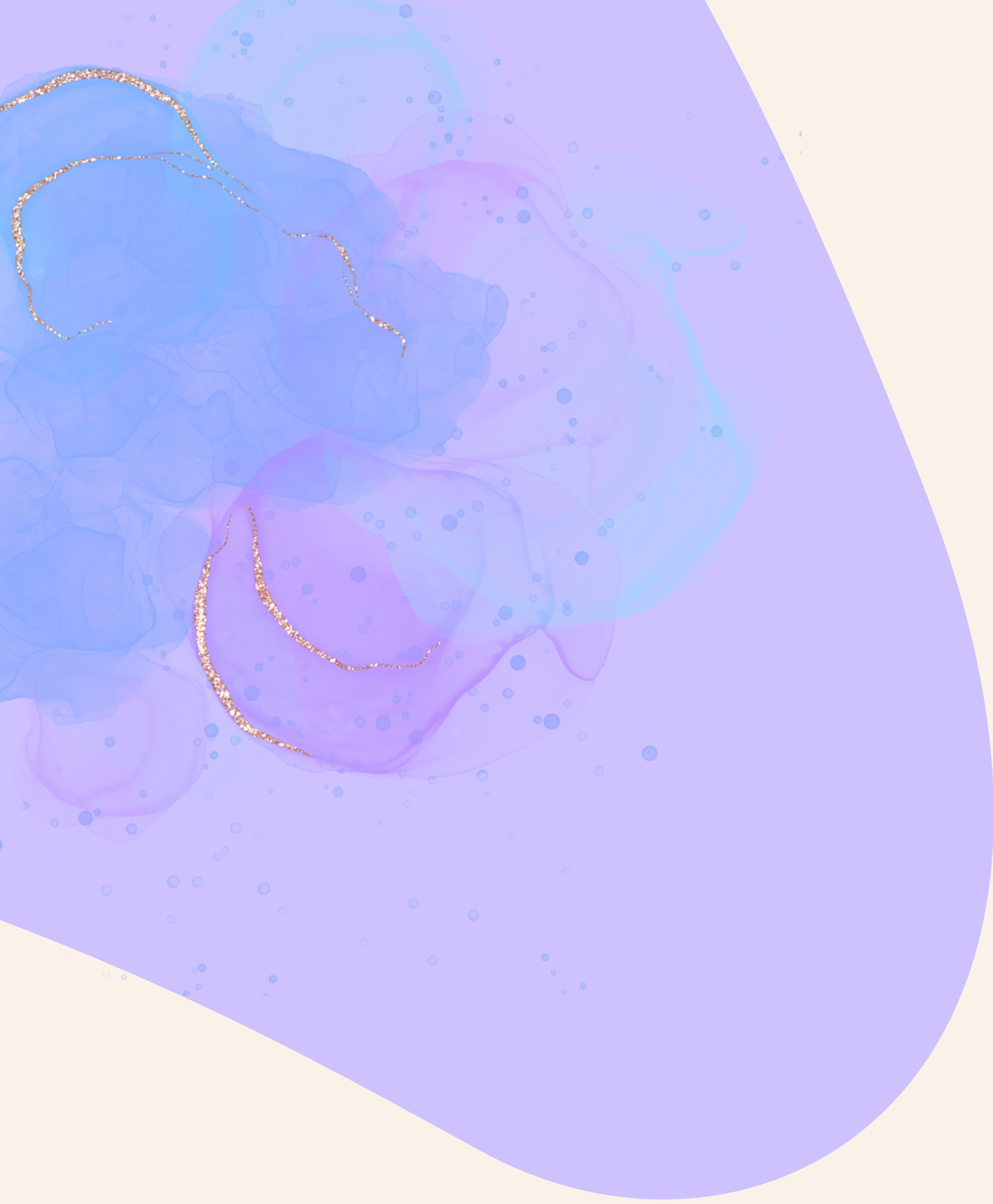
**Lilianna Korpała, kl. 2b**





**Ksenia Danilewska, kl. 2a**





**Natalia Galińska, kl. 2a**